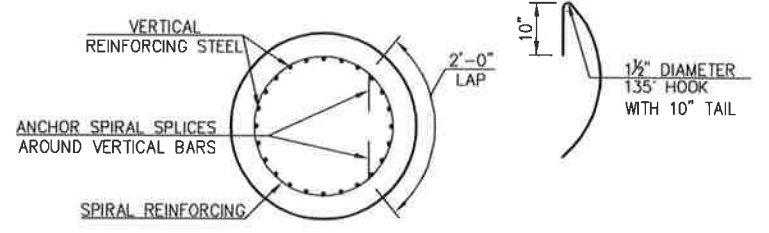
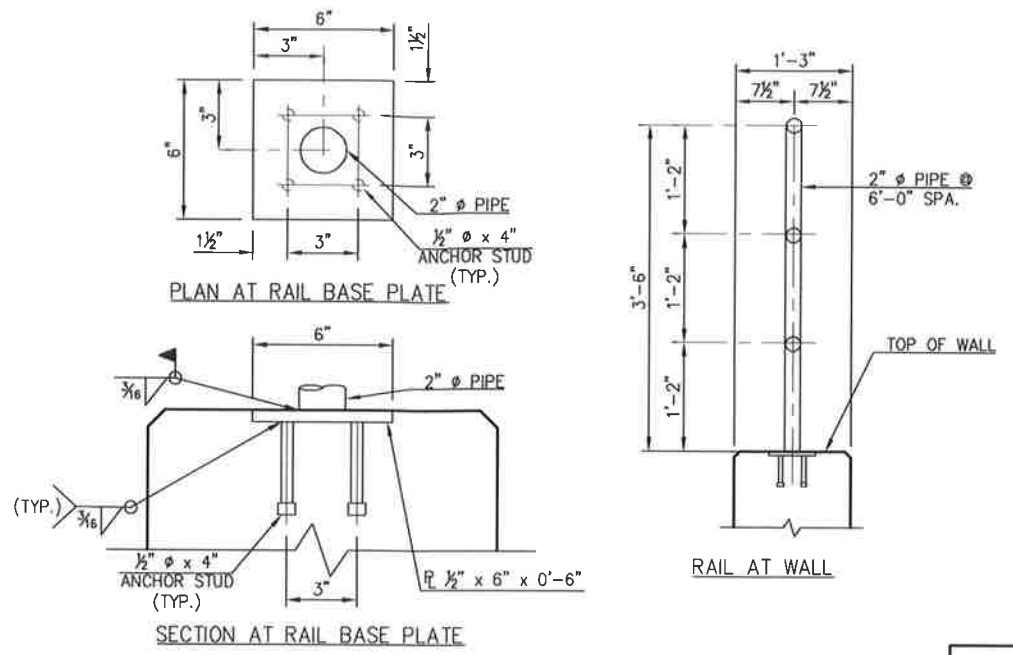
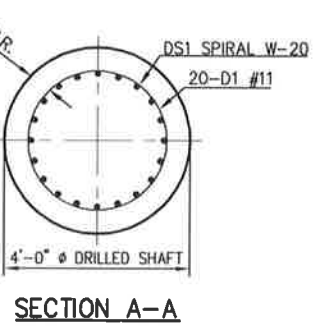
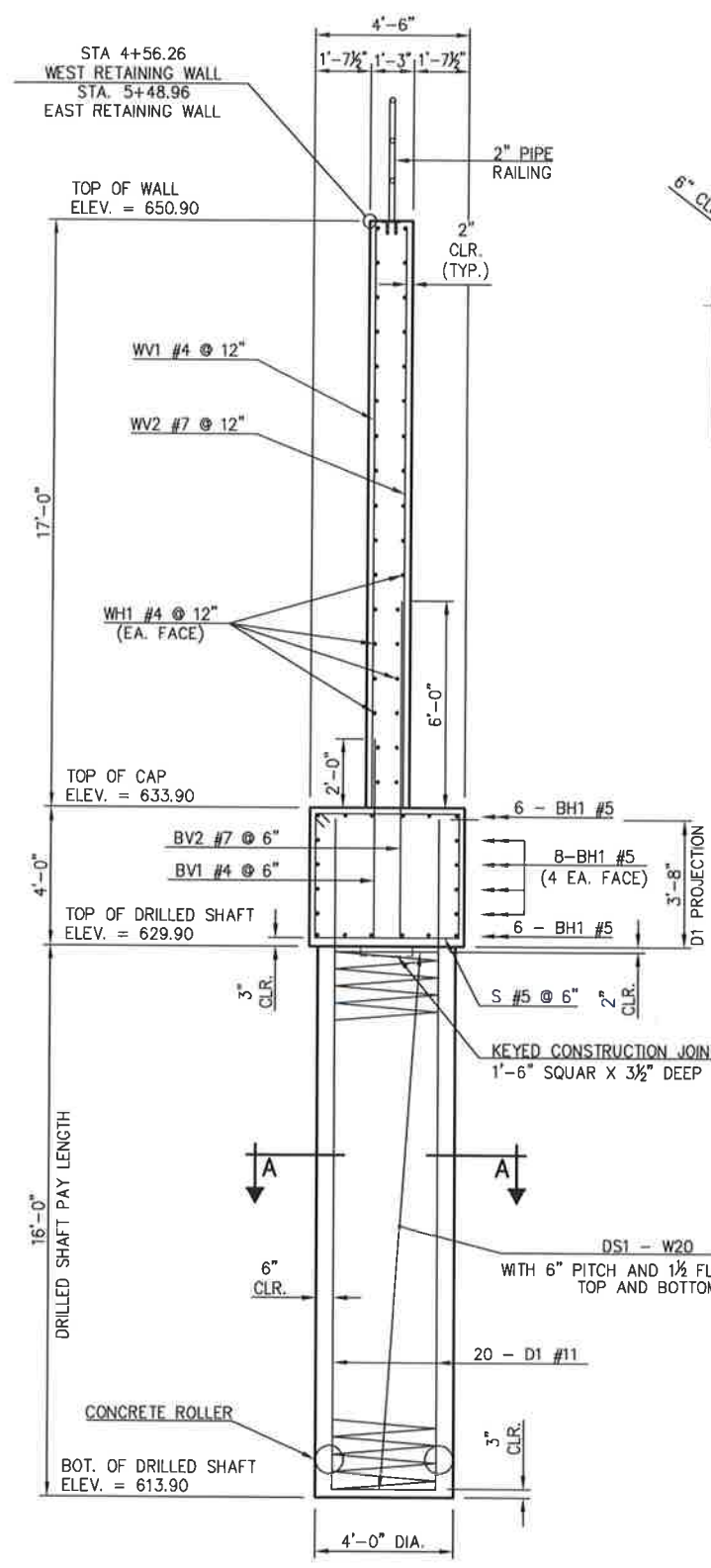


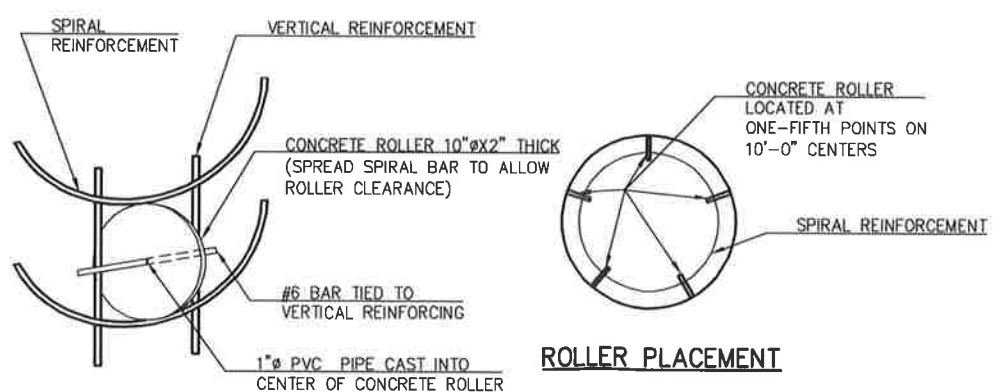
REVISIONS		
REV. NO.	DESCRIPTION	DATE

**LOAD AND RESISTANCE FACTOR DESIGN DATA**  
 CLASS A CONCRETE  $f'_c = 3,000$  p.s.i.  
 REINFORCING STEEL (GRADE 60)  $f_y = 60,000$  p.s.i.  
 DESIGN: AASHTO LRFD BRIDGE DESIGN SPECIFICATIONS, 7TH EDITION

**FOUNDATION DATA**  
**PIER (48" DIAMETER DRILLED SHAFTS)**  
 FACTORED REACTION = 60 TONS/SHAFT  
 NOMINAL UNIT BEARING RESISTANCE = 24.0 TSF  
 BEARING RESISTANCE FACTOR = 0.50  
 FACTORED BEARING RESISTANCE = 151 TONS/SHAFT  
 NOMINAL UNIT FRICTION RESISTANCE = 2.00 TSF  
 FRICTION RESISTANCE FACTOR = 0.45  
 FACTORED FRICTION RESISTANCE = 181 TONS/SHAFT  
 TOTAL FACTORED RESISTANCE = 332 TONS/SHAFT



**DETAIL OF SPIRAL REINFORCING SPLICE**  
 NOTE: SPIRAL BARS SHALL CONFORM TO AASHTO M-32. SPIRAL BAR LENGTH DOES NOT INCLUDE LAP. IF LAP IS REQUIRED, THE LENGTH OF THE LAP SHALL BE AS SHOWN.



**ROLLER INSTALLATION**  
**DETAIL OF CONCRETE ROLLER**  
 NOTE: CONCRETE USED IN THE CONCRETE ROLLERS SHALL HAVE A MINIMUM 28 DAY COMPRESSIVE STRENGTH OF 4,000 P.S.I. SLAB BOLSTERS, HIGH CHAIRS AND PLASTIC ROLLERS SHALL NOT BE SUBSTITUTED FOR THE CONCRETE ROLLERS.

**BAR LIST - WEST RETAINING WALL**

MARK	SIZE	NO.	FORM	LENGTH
REINFORCING STEEL				
BH1	#5	20	STR.	54'-8"
BV1	#4	56	STR.	5'-9"
BV2	#7	111	STR.	9'-9"
WH1	#4	34	STR.	54'-8"
WV1	#4	56	STR.	16'-10"
WV2	#7	56	STR.	16'-10"
S	#5	111	BNT.	16'-5"
DRILLED SHAFTS ②				
D1	#11	120	STR.	19'-5"
DS1	W20	6	SPIRAL	322'-6"

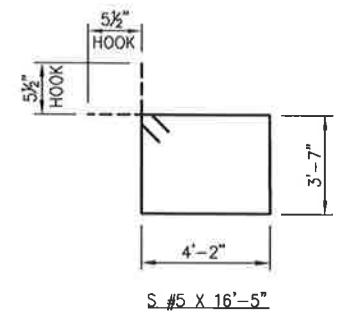
**BAR LIST - EAST RETAINING WALL**

MARK	SIZE	NO.	FORM	LENGTH
REINFORCING STEEL				
BH1	#5	20	STR.	43'-8"
BV1	#4	45	STR.	5'-9"
BV2	#7	89	STR.	9'-9"
WH1	#4	34	STR.	43'-8"
WV1	#4	45	STR.	16'-10"
WV2	#7	45	STR.	16'-10"
S	#5	89	BNT.	16'-5"
DRILLED SHAFTS ②				
D1	#11	100	STR.	19'-5"
DS1	W20	5	SPIRAL	322'-6"

- ① INCLUDED IN PRICE BID PER SQUARE YARD OF RETAINING WALL
- ② INCLUDED IN PRICE BID PER LINEAR FOOT OF DRILLED SHAFT

**RETAINING WALL QUANTITIES**

ITEM	UNIT	WEST	EAST	TOTAL
RETAINING WALL	S.Y.	103.9	83.2	187.1
CLASS A CONCRETE	C.Y.	36.7	29.4	66.1
EPOXY COATED REINFORCING STEEL	LB.	5470	4390	9860
DRILLED SHAFTS 48" DIAMETER	L.F.	96	80	176
2" PIPE RAILING	L.F.	54	42	96



DESIGN		E-1844/DAIRY LANE OVER UPRR	ATOKA COUNTY
DETAIL		<b>RETAINING WALL DETAILS</b>	
CHECK			
NEO DESIGN LLC		STATE JOB PIECE NO. 31169(04)	SHEET NO. 8002

N:\JOBS\CED3\Daily Lane Over UPRR\DWG\Daily Lane Retaining Wall.dwg, DETAILS, 6/21/2017 9:25:13 AM